

## **RAKE (SCULPTURED)**

FE2010 - SCULPTURED RAKE - WALL PANEL

FE2015 - SCULPTURED RAKE - WALL PANEL - JOIST

FE2050 - SCULPTURED RAKE - WALL BY OTHERS

FE2055 - SCULPTURED RAKE - WALL BY OTHERS - JOIST

FE2610 - SCULPTURED RAKE - INSULATED WALL PANEL

FE2615 - SCULPTURED RAKE - INSULATED WALL PANEL - JOIST

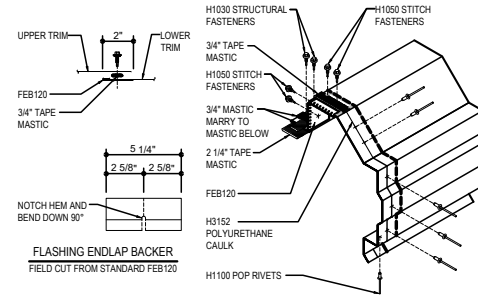
---

## FE2010 - SCULPTURED RAKE w/ WALL PANEL

[Download the DWG file by clicking here.](#)

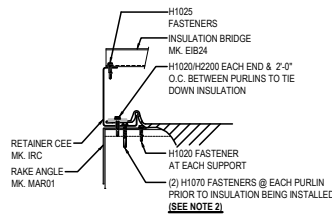
### RAKE LAP & FLASHING BACKER

SLIDE FIELD CUT SECTION OF FLASHING ENLAP BACKER ONTO THE LOWER TRIM PIECE AS SHOWN BELOW. PLACE TAPE MASTIC NEXT TO HEM OF THE BACKER (NOT ON TOP OF HEM). APPLY CONTINUOUS BEAD OF CAULK 1" FROM END OF TRIM DOWN PROFILE OF TRIM. FASTEN LAP WITH STITCH FASTENERS AND POP RIVETS AS SHOWN. ROOF STRUCTURAL FASTENERS SHOULD BE USED TO FASTEN THROUGH PANEL FLAT INTO RAKE ANGLE.



### ERECTOR NOTE: \*

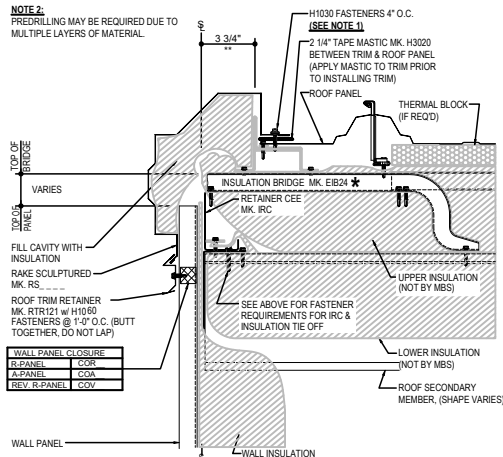
STARTING RAKE CONDITION IS SHOWN. BRIDGE PREPARATION WILL VARY BETWEEN THE STARTING AND ENDING RAKES, SEE BRIDGE INSTALLATION DETAILS FOR SPECIFIC BRIDGE REQUIREMENTS.



RETAINER CEE & INSULATION TIE-OFF DETAIL

### NOTE 1: KEEP FASTENERS 2" AWAY FROM RAKE CLIPS!!

NOTE 2: PREDRILLING MAY BE REQUIRED DUE TO MULTIPLE LAYERS OF MATERIAL.



### R-Boost™ RAKE DETAIL

RAKE SCULPTURED DETAIL w/ WALL PANELS  
SEE WALL SHEETING ERECTION NOTES FOR WALL PANEL FASTENER LOCATIONS

FE2010

### Detailer Notes:

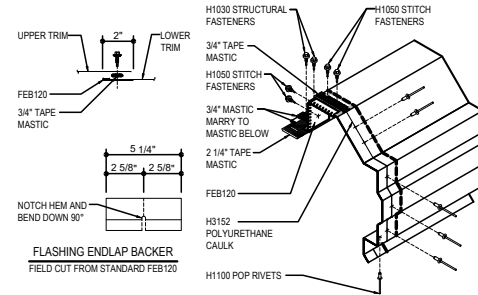
- 1) CLOSURE LAYER IS ON BY DEFAULT.  
CLOSURE LAYER MUST BE TURNED OFF IF CLOSURES ARE NOT REQUIRED.

## FE2015 - SCULPTURED RAKE w/ WALL PANEL - JOIST

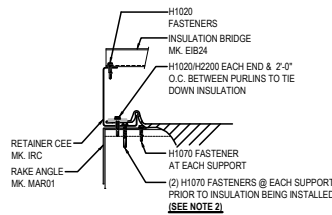
[Download the DWG file by clicking here.](#)

### RAKE LAP & FLASHING BACKER

SLIDE FIELD CUT SECTION OF FLASHING ENLAP BACKER ONTO THE LOWER TRIM PIECE AS SHOWN BELOW. PLACE TAPE MASTIC NEXT TO HEM OF THE BACKER (NOT ON TOP OF HEM). APPLY CONTINUOUS BEAD OF CAULK 1" FROM END OF TRIM DOWN PROFILE OF TRIM. FASTEN LAP WITH STITCH FASTENERS AND POP RIVETS AS SHOWN. ROOF STRUCTURAL FASTENERS SHOULD BE USED TO FASTEN THROUGH PANEL FLAT INTO RAKE ANGLE.



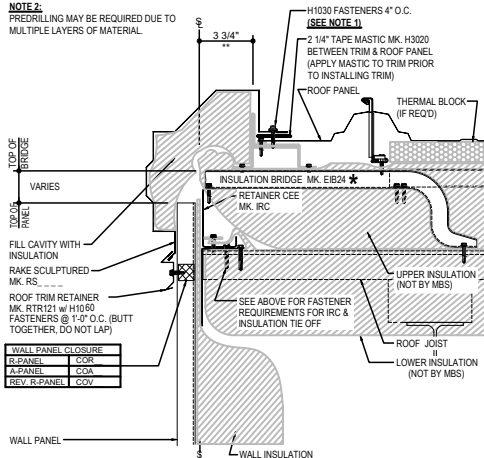
**ERECTOR NOTE: \***  
STARTING RAKE CONDITION IS SHOWN. BRIDGE PREPARATION WILL VARY BETWEEN THE STARTING AND ENDING RAKES, SEE BRIDGE INSTALLATION DETAILS FOR SPECIFIC BRIDGE REQUIREMENTS.



RETAINER CEE & INSULATION TIE-OFF DETAIL

**NOTE 1: KEEP FASTENERS 2" AWAY FROM RAKE CLIPS!!**

**NOTE 2:**  
PREDRILLING MAY BE REQUIRED DUE TO MULTIPLE LAYERS OF MATERIAL.



### R-Boost™ RAKE DETAIL

RAKE SCULPTURED DETAIL w/ WALL PANELS  
SEE WALL SHEETING ERECTION NOTES FOR WALL PANEL FASTENER LOCATIONS

FE2015

### Detailer Notes:

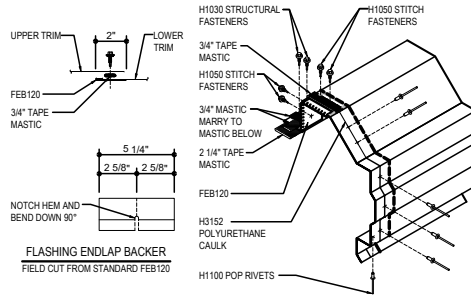
- 1) CLOSURE LAYER IS ON BY DEFAULT.  
CLOSURE LAYER MUST BE TURNED OFF IF CLOSURES ARE NOT REQUIRED.

## FE2050 - SCULPTURED RAKE w/ WALL BY OTHERS

[Download the DWG file by clicking here.](#)

### RAKE LAP & FLASHING BACKER

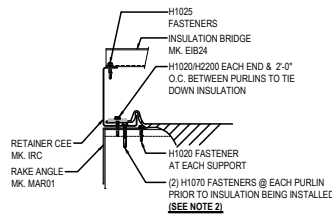
SLIDE FIELD CUT SECTION OF FLASHING ENDLAP BACKER ONTO THE LOWER TRIM PIECE AS SHOWN BELOW. PLACE TAPE MASTIC NEXT TO HEM OF THE BACKER (NOT ON TOP OF HEM). APPLY CONTINUOUS BEAD OF CAULK 1" FROM END OF TRIM DOWN PROFILE OF TRIM. FASTEN LAP WITH STITCH FASTENERS AND POP RIVETS AS SHOWN. ROOF STRUCTURAL FASTENERS SHOULD BE USED TO FASTEN THROUGH PANEL FLAT INTO RAKE ANGLE.



FLASHING ENDLAP BACKER  
FIELD CUT FROM STANDARD FEB120

### ERECTOR NOTE: \*

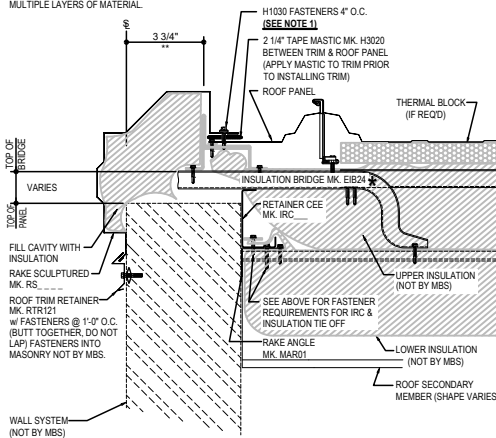
STARTING RAKE CONDITION IS SHOWN. BRIDGE PREPERATION WILL VARY BETWEEN THE STARTING AND ENDING RAKES, SEE BRIDGE INSTALLATION DETAILS FOR SPECIFIC BRIDGE REQUIREMENTS.



RETAINER CEE & INSULATION TIE-OFF DETAIL

**NOTE 1: KEEP FASTENERS 2" AWAY FROM RAKE CLIPS!!**

**NOTE 2:**  
PREDRILLING MAY BE REQUIRED DUE TO MULTIPLE LAYERS OF MATERIAL.



### R-Boost™ OPEN RAKE DETAIL

STARTING RAKE DETAIL, OPEN FOR WALL w/CONSTRUCTION NOT BY MBS

FE2050

### Detailer Notes:

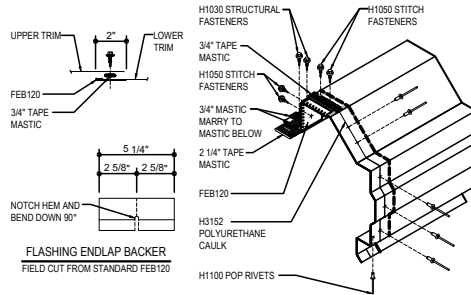
- 1) N/A

## FE2055 - SCULPTURED RAKE - WALL BY OTHERS - JOIST

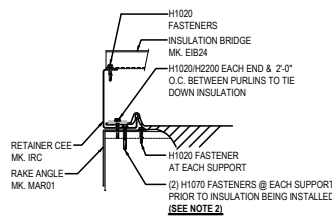
[Download the DWG file by clicking here.](#)

### RAKE LAP & FLASHING BACKER

SLIDE FIELD CUT SECTION OF FLASHING ENDLAP BACKER ONTO THE LOWER TRIM PIECE AS SHOWN BELOW. PLACE TAPE MASTIC NEXT TO HEM OF THE BACKER (NOT ON TOP OF HEM). APPLY CONTINUOUS BEAD OF CAULK 1" FROM END OF TRIM DOWN PROFILE OF TRIM. FASTEN LAP WITH STITCH FASTENERS AND POP RIVETS AS SHOWN. ROOF STRUCTURAL FASTENERS SHOULD BE USED TO FASTEN THROUGH PANEL FLAT INTO RAKE ANGLE.



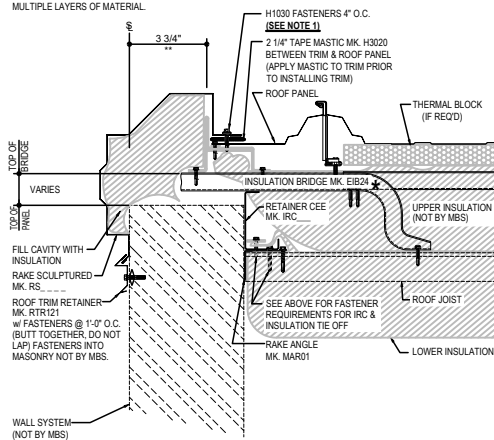
**ERECTOR NOTE: \***  
STARTING RAKE CONDITION IS SHOWN. BRIDGE PREPERATION WILL VARY BETWEEN THE STARTING AND ENDING RAKES, SEE BRIDGE INSTALLATION DETAILS FOR SPECIFIC BRIDGE REQUIREMENTS.



### RETAINER CEE & INSULATION TIE-OFF DETAIL

**NOTE 1: KEEP FASTENERS 2" AWAY FROM RAKE CLIPS!!**

**NOTE 2:**  
PREDRILLING MAY BE REQUIRED DUE TO MULTIPLE LAYERS OF MATERIAL.



### R-Boost™ OPEN WALL RAKE DETAIL

STARTING RAKE DETAIL w/ JOIST AND WALL OPEN FOR WALL SYSTEM NOT BY MBS

FE2055

### Detailer Notes:

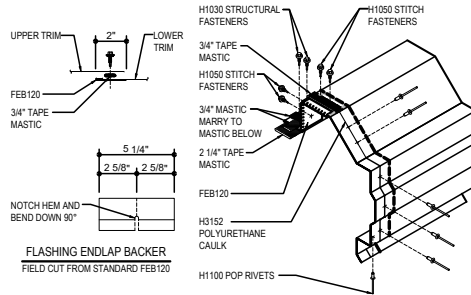
- 1) N/A

## FE2610 - SCULPTURED RAKE - INSULATED WALL PANEL

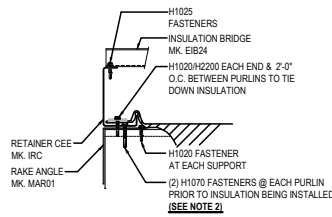
[Download the DWG file by clicking here.](#)

### RAKE LAP & FLASHING BACKER

SLIDE FIELD CUT SECTION OF FLASHING ENDLAP BACKER ONTO THE LOWER TRIM PIECE AS SHOWN BELOW. PLACE TAPE MASTIC NEXT TO HEM OF THE BACKER (NOT ON TOP OF HEM), APPLY CONTINUOUS BEAD OF CAULK 1" FROM END OF TRIM DOWN PROFILE OF TRIM. FASTEN LAP WITH STITCH FASTENERS AND POP RIVETS AS SHOWN. ROOF STRUCTURAL FASTENERS SHOULD BE USED TO FASTEN THROUGH PANEL FLAT INTO RAKE ANGLE.



**ERECTOR NOTE: \***  
STARTING RAKE CONDITION IS SHOWN. BRIDGE PREPARATION WILL VARY BETWEEN THE STARTING AND ENDING RAKES, SEE BRIDGE INSTALLATION DETAILS FOR SPECIFIC BRIDGE REQUIREMENTS.

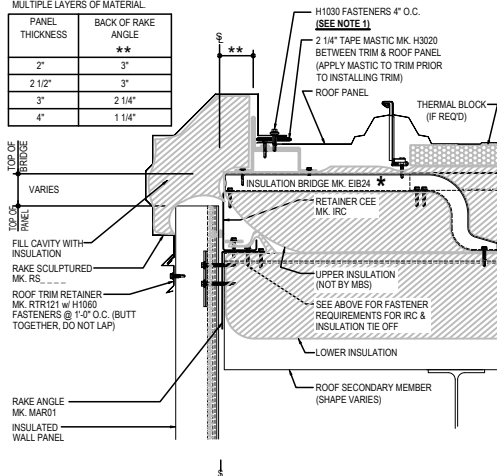


### RETAINER CEE & INSULATION TIE-OFF DETAIL

**NOTE 1: KEEP FASTENERS 2" AWAY FROM RAKE CLIPS!!**

**NOTE 2:** REDRILLING MAY BE REQUIRED DUE TO MULTIPLE LAYERS OF MATERIAL.

PANEL THICKNESS	BACK OF RAKE ANGLE
2"	3"
2 1/2"	3"
3"	2 1/4"
4"	1 1/4"



R-Boost™ RAKE DETAIL  
RAKE DETAIL w/ INSULATED WALL PANELS

FE2610

### Detailer Notes:

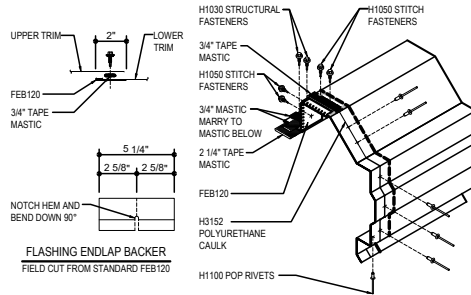
- 1) PANEL CLIP WC-01 REQUIRES 2 1/2" MINIMUM BEARING ON RAKE ANGLE TO ALLOW ROOM FOR (2) FASTENERS.

## FE2615 - SCULPTURED RAKE - INSULATED WALL PANEL - JOIST

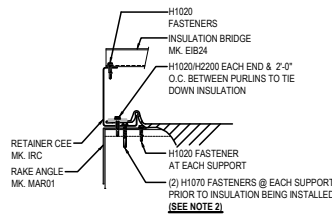
[Download the DWG file by clicking here.](#)

### RAKE LAP & FLASHING BACKER

SLIDE FIELD CUT SECTION OF FLASHING ENDLAP BACKER ONTO THE LOWER TRIM PIECE AS SHOWN BELOW. PLACE TAPE MASTIC NEXT TO HEM OF THE BACKER (NOT ON TOP OF HEM). APPLY CONTINUOUS BEAD OF CAULK 1" FROM END OF TRIM DOWN PROFILE OF TRIM. FASTEN LAP WITH STITCH FASTENERS AND POP RIVETS AS SHOWN. ROOF STRUCTURAL FASTENERS SHOULD BE USED TO FASTEN THROUGH PANEL FLAT INTO RAKE ANGLE.



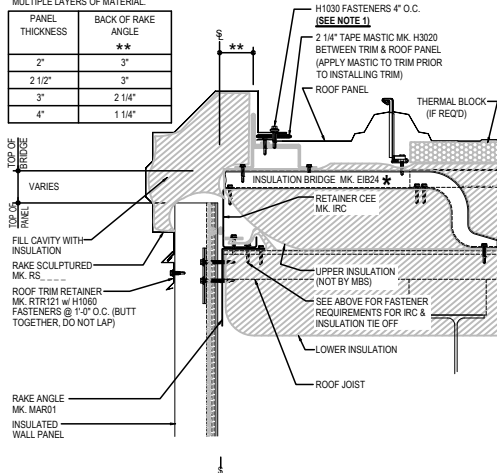
**ERECTOR NOTE: \***  
STARTING RAKE CONDITION IS SHOWN. BRIDGE PREPARATION WILL VARY BETWEEN THE STARTING AND ENDING RAKES, SEE BRIDGE INSTALLATION DETAILS FOR SPECIFIC BRIDGE REQUIREMENTS.



### RETAINER CEE & INSULATION TIE-OFF DETAIL

**NOTE 1: KEEP FASTENERS 2\"**  
**AWAY FROM RAKE CLIPS!!**

**NOTE 2:**  
PREDRILLING MAY BE REQUIRED DUE TO MULTIPLE LAYERS OF MATERIAL.



R-Boost™ RAKE DETAIL  
RAKE DETAIL w/ JOIST & INSULATED WALL PANEL

FE2615

### Detailer Notes:

- 1) PANEL CLIP WC-01 REQUIRES 2 1/2" MINIMUM BEARING ON RAKE ANGLE TO ALLOW ROOM FOR (2) FASTENERS.